

Nostalgic Futures

Jiyeon, Aelle, and Claudio



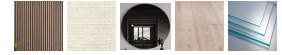
Client Requirements

Our client required us to reimagine the current architecture lobby, rather than merely being a hallway, and a function for movement, it is to represent the futuristic advancements of Korea University's Architecture Department. Additionally, it is meant to serve as a place for students to rest or study for extended amounts of time—promoting creativity and reducing stress.

Our client made specific requests for us to fulfill as well:

1. evoking a comforting, warm mood while having elements of euphoria and futurism
2. redistribution of lighting to make the space feel more alive and enticing
3. addition of seating furniture
4. integration of plants in the design
5. use of hardwood flooring

Material selection



Design Process

When drafting our floor plans and zoning, we placed the interaction of hominess and futuristic architecture at the forefront of our minds. Although at first glance, creating a sense of "nostalgic" yet "futuristic" space seems contradictory, we attempted to find a way for the contrasting ideas to work together in harmony.

The use of plants, hardwood floors, rugs, and warm lighting, and cushioned seating created a sense of hospitality, warmth, and hominess. Conversely, the darkened glass material, strategic placement of furnitures, shaping of the lighting fixtures, and wooden paneling create a sense of futurism. As a whole, the elements of our renovated lobby work cohesively to align with our client's vision.

Color scheme



Storage and Display

We provided ample space for the Architecture Department to display students' work via wall space and multi-layer shelving. We chose glass material for the wall storage because it will protect the student's work from potential accidents, allow for ample visibility, and provides that touch of futurism that our client requires. It also makes efficient use of the limited space we have to work with.



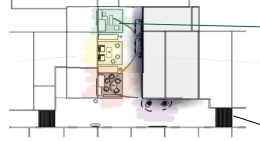
Our custom-made wooden benches provide seating and storage for plants (above) and more student work (below). The wood benches showcase a unique crossover between function and future.



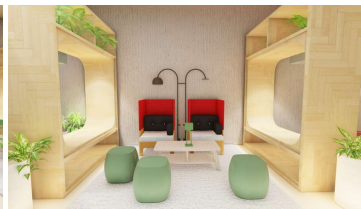
We replaced the bulletin board with a television to provide a more modern way to make announcements.

Spacial Organization

Our renovated architecture lobby is divided into 5 sections. The orange, yellow, and green zones are separated by the wooden benches. Each section serves as a space for seating but with different purposes.



The green zone is intended for quick seating, simple furniture allows individuals and groups to utilize the space and arrange it however they prefer. This is the most "free-form" and relaxed zone.
The blue zone utilizes tiered seating to provide space-efficient study areas for students.
The purple zone provides semi-private seating with a bulletin board. The wooden paneling is an important inclusion because it offers some seclusion from the busyness of the hallway and stairs.
The mirror on wooden paneling serves as a divider from our renovated section to the rest of the office hallway.



Lighting

The custom-made S-shaped ceiling light creates a euphoric and futuristic feel to the room. Additionally, we added extra curvature to the sections above student seating so it provides ample light.

In the same vein, we focused on incorporating different shapes when selecting desk lamps to enhance the futuristic feel of the hallway. However, we chose to keep the shade of green consistent among the desk lamps so that a sense of harmony would not be lost in the diversity of shapes.

Although the shapes of the lighting adds to the futuristic feel of the hallway, the warmth of the light itself preserves the comforting, nostalgic feeling of the space.



Movement and hallway perception

Although the hallway is filled with more student seating in our renovation, we still made sure to keep an open walkway so that the original function of the space isn't lost.

We also thought consistently about the view of the hallway from different perspectives. We ensured the view of the hallway was not obstructed by the placement of furniture. This is important for the ease of accessibility to the Architecture Department's office. Another bonus of the transparency is that students can take note of available seating from afar.

